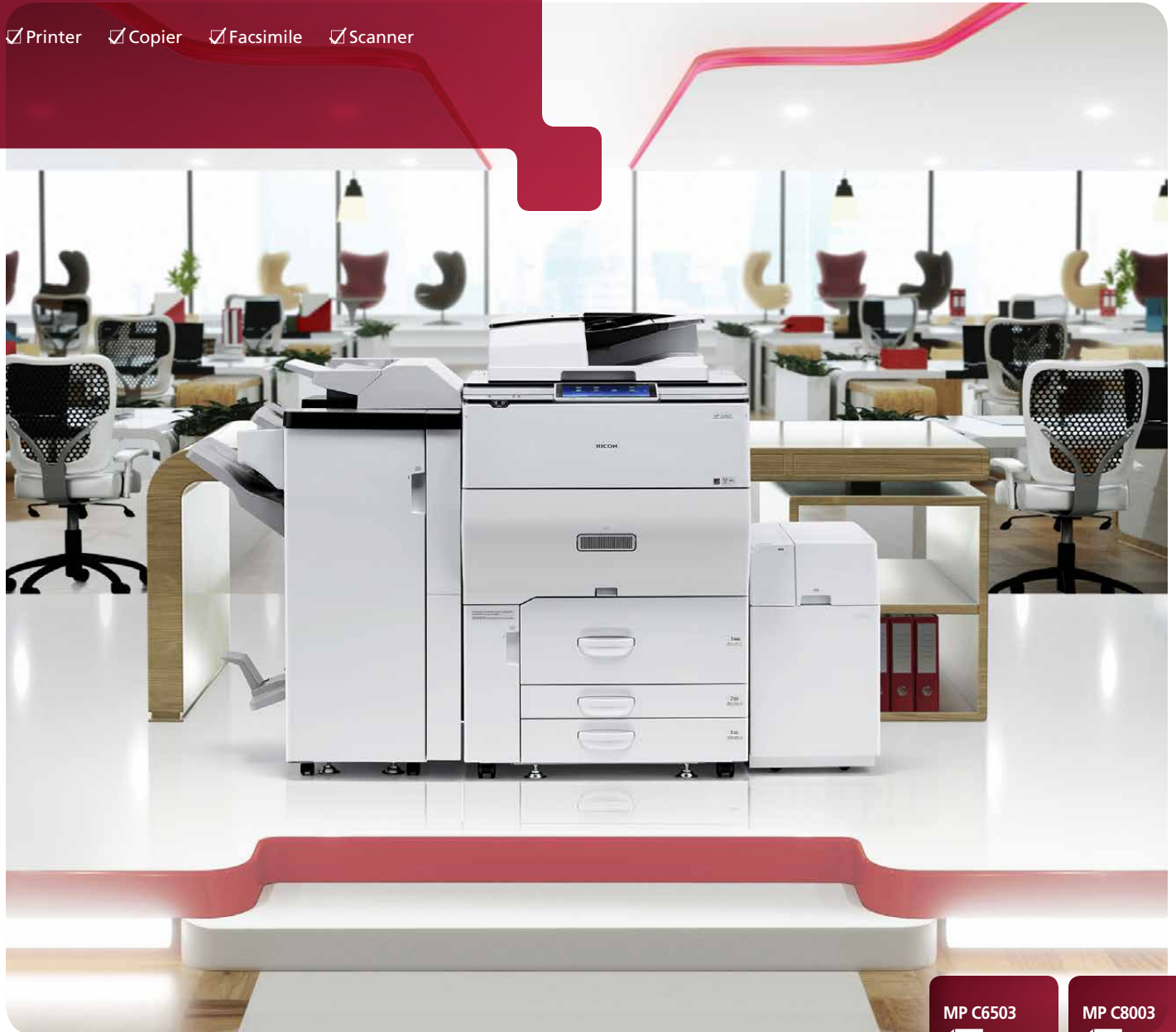


Multifunction Color

# RICOH MP C6503 MP C8003

✓ Printer   ✓ Copier   ✓ Facsimile   ✓ Scanner



**RICOH**  
imagine. change.

MP C6503

65  
ppm

monochrome  
and full-color

MP C8003

80  
ppm

monochrome  
and full-color

## Be more productive by working smarter

How much do you value intelligent technology? Find out with the customizable RICOH® MP C6503/MP C8003 color digital MFP. Simplify everyday document management tasks and move information quickly and accurately — so you can make smarter decisions that improve productivity and grow your business. Produce a wider range of high-quality media in general office environments at up to 80 pages per minute (ppm). Distribute documents and images instantly via convenient Scan-to capabilities. Use paperless faxing to deliver important forms with fewer hassles and less cost. Take advantage of advanced security features to protect your best ideas. With our Workstyle Innovation Technology, you can create your own one-touch automated shortcuts on the dynamic Smart Operation Panel. Or, use your smartphone, tablet or laptop to manage the same tasks on the go.

- Produce color or black-and-white documents at up to 80 ppm
- Minimize errors and delays by creating automated workflows
- Use intuitive Smart Operation Panel features to transition quickly between jobs
- Print and share information from your personal mobile device
- Create more color documents in-house to reduce outsourcing costs
- Conserve energy and paper with environmentally friendly features



## Meet every demand every time

Add personalization and productivity to high-volume workloads

### Go all in with all-in-one performance

Every day brings something different, but at least you'll know how to get it done quickly with the reliable MP C6503/MP C8003. It includes a motion sensor that wakes up the control panel automatically from sleep mode as you approach, so you can start multitasking immediately. Take advantage of output speeds that reach up to 80 pages per minute to print and copy notes, invoices, handouts and other forms with incredible speed and precision. Scan originals via a 220-Sheet Single Pass Document Feeder (SPDF) and choose from a wide range of Scan-to capabilities to share them electronically in only moments. Send and receive contracts and other fax documents through email and save on paper and transmission costs.



### Perform more tasks in more places

Don't stop working when you start moving. Download the RICOH Smart Device Connector app to control all print, copy, scan and fax functions from your Android® or iOS® device. Access digital files directly from your device or Cloud applications and send them to the MFP. Scan originals at the MFP and send them to your device electronically as PDFs that you can carry with you. Or, send them directly to contacts in your personal address book just as easily.



### Impress with more media options

Give every audience what it wants. Expand paper capacity up to 8,100 sheets to work continuously with fewer delays. Choose from multiple paper trays, including tandem trays, and load the device with the right stocks for the right audience. Print black-and-white output or compelling full-color brochures, proposals and more with image quality up to 1200 x 4800 dpi. You can even produce colorful banners up to 49.6" long.







# Use technology intelligently

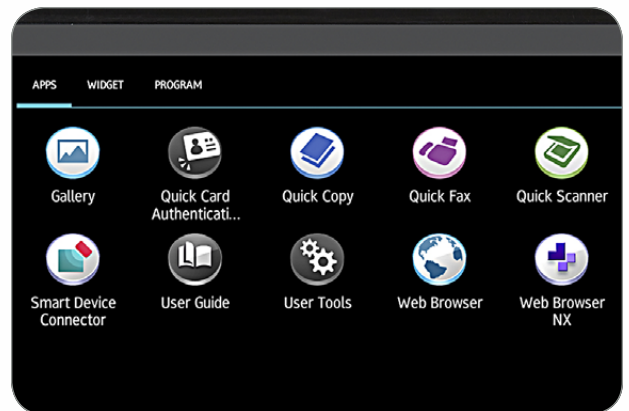
## Tap into a new way to work

Complete more jobs quickly via innovative RICOH Workstyle Innovation Technology. We've removed all hardwired keys on the large 10.1" touchscreen Smart Operation Panel, so you can use the same scrolling and pinch-and-flick movements you use on your personal mobile device to access settings, change details and transition between jobs and tasks with ease. Users can choose from multiple interfaces. Simply tap an icon to perform primary tasks such as copying, scanning or faxing with a single touch. Choose an intuitive, straightforward grid layout to access critical information quickly and dive deeper into details without extensive searches or delays. You can even opt for the look of our legacy control panels and pack more information onto a single screen.



## Customize how your work flows

You know what needs to be done. With the MP C6503/MP C8003, you'll know exactly how to do it faster. Create iconic one-touch shortcuts for frequently used workflows. If you know you'll be sending a weekly newsletter to clients, create a workflow for it and avoid repetitive manual rekeying. Simply press the customized icon, grab your file or scan the document and your list of recipients populates automatically. For other specialized functions, choose from a wide range of downloadable workflow apps and customize the control panel to fit your unique needs. Do you handle a lot of two-sided forms, such as insurance cards? Use the ID Card Copy app and scan them onto a single-sided document. Opt for other apps, including Scan-to-Folder Helper, Printer Native, Conference Concierge, Shared Folder Print and Easy Book Copy, just as easily.



## Put critical information within your reach

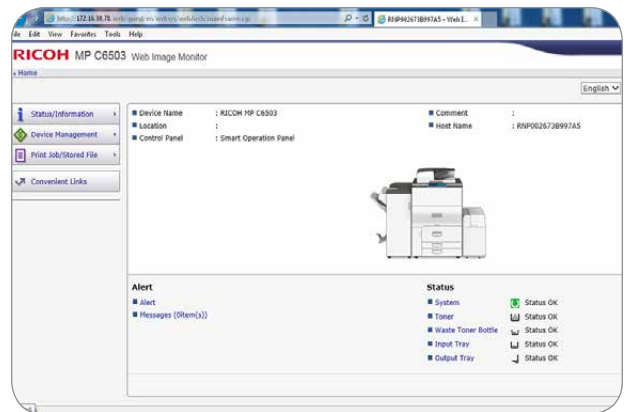
Searching for answers is easier when you know where to look. Find critical information in moments with the MP C6503/MP C8003. Store up to 3,000 frequently used files on the Document Server. Select the one you need with a single tap on the Smart Operation Panel. You can also take advantage of optical character recognition (OCR) to place metadata on documents, images and PDF files — and search for them via keywords. Utilize the embedded web browser or Cloud-based applications to work with important information, images, documents, and more.



# Control information and costs throughout the enterprise

## Make smarter administrative decisions

Get closer to optimal performance even when you're far away. Capture critical information remotely to make more informed administrative decisions for your entire fleet. Use RICOH @Remote™ to monitor the status of every device and collect critical information and meter reads in real time, so you can identify and resolve issues before they compromise productivity. Use RICOH Device Manager NX to manage configurations and updates in moments via any web browser. Detect, install or update print drivers automatically with RICOH Device Software Manager.



## Bring accountability to the enterprise

The most effective messages are targeted for specific audiences. Why risk losing them before they get there? With user authentication, users must login using a passcode on the control panel or present their ID or proximity card to the optional NFC Card Reader to access critical information and perform MFP functions. Use it to track specific projects to identify bottlenecks and unnecessary printing. Plus, you can pair the MFP with RICOH Streamline NX® and issue chargebacks to specific users and workgroups. Take advantage of Locked Print to keep each job in the print queue — and out of the hands of passersby — until the authorized user releases them. Add a watermark to documents to prevent unauthorized users from trying to copy confidential information. In addition, the device offers powerful data encryption and automatic latent data overwrite to help protect information on the hard drive.



## Make a big impact with less energy

You may be consumed by work, but that's no reason to let it drain your energy. The MP C6503/MP C8003 is ENERGY STAR® certified, meets EPEAT® Gold rating\* and offers a Typical Electricity Consumption (TEC) as low as 4.6 kWh/week. It's also designed specifically for quieter operation. Do your part by programming the device to power off at a time of your choosing. To save paper costs, keep duplex printing as the default setting. To reduce output costs, set quotas to limit unnecessary printing or restrict specific users or workgroups to black-and-white printing. You can also share reminders about responsible paper usage via the Eco-Friendly Indicator at the control panel.



\*EPEAT Gold rating is applicable only in the USA.

# Add high-end performance in high-volume environments

- 1 Smart Operation Panel:** Find faster transitions between tasks at your fingertips. Choose from multiple user interfaces and create customized shortcuts on the 10.1"-wide Smart Operation Panel. Perform everyday MFP functions and access important details via familiar swipe scrolling and pinch-and-flick movements. Download convenient apps to capture even more information or to automate workflows and minimize manual tasks. Add helpful widgets and tap into more information about supplies, energy usage, incoming faxes and more.
  - 2 220-Sheet Single Pass Document Feeder (SPDF):** Place multi-page, multi-sized originals and one- and two-sided documents up to 11" x 17" in the convenient feeder for faster, more reliable scanning.
  - 3 User Authentication:** Take advantage of an optional NFC Card Reader to authenticate users and track activity.
  - 4 Paper Trays and 100-Sheet Bypass Tray:** Minimize paper reloads with four standard paper sources – a 2,500-Sheet (1,250 sheets x 2) Tandem Paper Tray, two 550-Sheet Paper Trays and a 100-Sheet Bypass Tray. Use the optional Banner Paper Guide Tray to accommodate banner printing on sheets up to 12.6" x 49.6".
  - 5 Paper Banks (Optional):** Expand paper capacity via an optional 2,200-Sheet Large Capacity Tray for paper sizes up to 13" x 19.2" or a 4,400-Sheet Large Capacity Tray for 8.5" x 11" paper sizes.
  - 6 Finishers (Optional):** Choose from 65- or 100-Sheet stapling for documents up to 13" x 19.2". Or, produce full-color booklets with an in-line Booklet Finisher. Other finishing options include Cover Interposers, a Multi-Folding Unit, a GBC StreamPunch and a Plockmatic Booklet Maker.
  - 7 USB/SD Card Slot:** Use the standard USB/SD Card Slot located conveniently on the control panel to print/scan from portable media.
  - 8 Oversize and Heavy Media Support:** Accepts 13" x 19.2" paper sizes and heavy media (up to 110 lb. Cover stock through the Bypass Tray and the RT4050 LCT) to give you many more options for in-house production.
- Document Server:** Store up to 3,000 frequently used files on the MFP's hard drive and access them with the touch of a button. Create up to 200 shared or passcode-protected personal folders to store the digital files.
  - VCSEL and PxP-EQ Toner Technology:** Vertical Cavity Surface Emitting Laser and high-quality toner provide more vivid colors and smooth gradations for improved text, fine lines, graphics and photographic reproductions.
  - 640 GB (320 GB x 2) Hard Disk Drive:** Secure documents with DataOverwriteSecurity System (DOSS), Data Encryption, Locked Print and more.





- **Web Browser:** Search for web pages directly or download files from Cloud applications using the embedded Web Browser on the Smart Operation Panel and print them as PDF files.
- **9-Bin Mailbox (Optional):** Keep print, copy and fax output from multiple users separate, so they can be retrieved quickly.

- **Dual Network Support:** Take advantage of the optional network interface port to connect to two networks simultaneously.
- **Broad Compatibility:** Quickly integrate these systems with built-in compatibility for PC and Mac® environments in LAN or wireless networks.

## Finish with impressive professionalism

Choose how you want to finish. Take your pick from three powerful finishers to accommodate the unique needs of you and your audience. Each is designed specifically to minimize manual tasks, so you can create professional-quality booklets, brochures, proposals and other output quickly and economically.



Finisher	Paper Capacity	Staple Capacity	Saddle Stitch	Hole-Punch
SR4110	3,000 Sheets	Up to 100 Sheets (LT)	N/A	Option
SR4120	3,000 Sheets	Up to 65 Sheets (LT)	N/A	Option
SR4130	2,000 Sheets	Up to 65 Sheets (LT)	Up to 20 Sheets	Option



To view detailed features of our multifunction color products online go to [www.ricoh-usa.com/products](http://www.ricoh-usa.com/products)

# RICOH MP C6503/MP C8003

SYSTEM SPECIFICATIONS



## General Specifications

<b>Configuration</b>	Console
<b>Scanning Element</b>	Flatted image scanning with 3-line CMOS array
<b>Printing Process</b>	4-drum dry electrostatic transfer system with internal transfer belt
<b>Output Speed (LTR)</b>	MP C6503: 65 ppm (B&W/Full-color) MP C8003: 80 ppm (B&W/Full-color)
<b>Document Feeder</b>	Standard 220-Sheet SPDF with single pass color duplex scanning
<b>Control Panel</b>	Full-color 10.1" Smart Operation Panel
<b>Color Resolution</b>	600 dpi
<b>Copy/Grayscale</b>	256 Levels
<b>Quantity Indicator</b>	1 - 9,999
<b>Original Size</b>	Up to 11" x 17" (279.4 x 431.8 mm) (from platen)
<b>Warm-Up Time</b>	MP C6503: 43 sec. (from main switch) MP C8003: 39 sec. (from main switch)
<b>Recovery Time</b>	MP C6503: 43 sec. (from sleep mode) MP C8003: 39 sec. (from sleep mode)
<b>First Copy Speed</b>	MP C6503: 5.5/7.5 sec. (B&W/Full-color)* MP C8003: 4.7/6.3 sec. (B&W/Full-color)* *8.5" x 11" LEF Tray 1
<b>Paper Capacity</b>	Tray 1: 1,250 sheets x 2 Trays 2 - 3: 550 sheets x 2 Bypass Tray: 100 sheets
<b>Total Paper Capacity</b>	3,700 sheets (std./8,100 sheets (max.))
<b>Paper Size</b>	Tray 1: 8.5" x 11" Trays 2 - 3: 5.5" x 8.5" to 13" x 19.2" Bypass Tray: 5.5" x 8.5" to 13" x 19.2"
<b>Paper Weight</b>	Tray 1/2/3: 14 lb. Bond - 142 lb. Index (52 - 256 g/m <sup>2</sup> ) Bypass Tray: 14 lb. Bond - 110 lb. Cover (52 - 300 g/m <sup>2</sup> ) Duplex: 14 lb. Bond - 142 lb. Index (52 - 256 g/m <sup>2</sup> )
<b>Magnification</b>	7 reduction and 5 enlargement
<b>Zoom</b>	25% to 400% in 1% increments
<b>Power Requirements</b>	MP C6503: 120 - 127V/16A/60Hz (dedicated) MP C8003: 208 - 240V/12A/60Hz (dedicated)
<b>Typical Electricity Consumption (TEC)</b>	MP C6503: 4.6 kWh/week MP C8003: 6.2 kWh/week
<b>Max. Power Consumption</b>	MP C6503: 1,920 W or less MP C8003: 2,400 W or less
<b>Dimensions (WxDxH)</b>	29.5" x 34.7" x 48.3" (750 x 880 x 1,225 mm) (incl. SPDF)
<b>Weight</b>	Less than 551 lbs. (250 kg)

## Copier Features

Web Browser, Eco-Friendly Indicator, ID Card Copy, Auto Off Timer, Energy Saver Timer, System Reset Timer, Simplified Display, Auto Color Selection, Auto Paper Selection, Auto Start, Auto Tray Switching, Auto Color Calibration, Book/Series/Combine/Sample Copy, Color Erase/Convert/Overlay, Cover/Chapter/Slip Sheet, Image Rotation, Interrupt Copy, Job Programs (25), User Codes (8 digits/1,000 users), Job Preset (8 jobs), Color/Image Creation, Color Balance Adjustment/Program, Shift/Erase/Margin Adjustment, Sharp/Soft/Contrast/Background Density/Under Color Removal/Text & Photo Separation Sensitivity/Color Erase Sensitivity Adjustment, Bates Stamp/Numbering, Centralized Address Book Management, DOSS HDD Overwrite, Data Encryption (AES256bit/SHA2), Authentication, IP Address Filtering, Unauthorized Copy Control, Secure Print, Encrypted/Digitally Signed PDF, Quota Setting, SMTP over SSL, Import/Export of Preference Settings, Genuine Adobe® PostScript® 3 and PDF Direct from Adobe® are available as options

## Printer Specifications (Standard)

<b>CPU</b>	Intel® Atom Processor Bay Trail-I - 1.91 GHz
<b>RAM</b>	4.0 GB
<b>HDD</b>	640 GB (320 GB x 2) (Shared)
<b>Max. Print Resolution</b>	1200 x 4800 dpi
<b>Standard Interfaces</b>	Ethernet (10Base-T/100Base-TX/1000Base-T), USB 2.0 Type A
<b>Optional Interfaces</b>	IEEE 1284/ECP, Wireless LAN (IEEE802.11a/b/g/n)
<b>Network Protocol</b>	TCP/IP (IPv4, IPv6)
<b>Network Operating Systems</b>	Windows® Vista™/7/8/8.1/10/Server 2008/Server 2008R2/Server 2012/Server 2012R2; Unix Sun Solaris, HP-UX, SCO OpenServer, RedHat Linux, IBM AIX; Citrix Presentation Server4.5/Citrix XenApp5.0; MAC OS X 10.7 or later; SAP R/3; IBM iSeries AS/400 using OS/400 Host Print Transform
<b>Print Drivers</b>	PCL5e, PCL6, PDF Direct, Optional Adobe PS3, IPDS
<b>Fonts</b>	Standard - PCL: 45 scalable + 13 international; PDF: 136 Roman
<b>Printer Features</b>	Optional - PS3: 136 Roman; IPDS: 108 Roman Sample/Locked/Hold/Scheduled/Store Print/Store and Print/Black Over Print, CLP Simulation, PDF Direct Print, Mail to Print, Classification Code, Bonjour (Rendezvous) Support, Windows Active Directory Support, DDNS Support, PCL Resident Font Adoption, Tray Parameter Change from Web Image Monitor, 1200 dpi Support, Universal Driver, XPS Support, WS Printer, Wireless LAN Interface Option, Media Direct Print (Print from USB/SD), Banner Page Print, Auto Job Promotion, AirPrint®, Poster Print, WPS (Wi-Fi Protected Setup)

## Scanner Specifications (Standard)

<b>Scanning Resolution</b>	Up to 600 dpi
<b>Scan Area</b>	Up to 11.7" x 17" (297 x 432 mm)
<b>Scan Speed</b>	Simplex: 120 ipm; Duplex: 220 ipm
<b>Output Format</b>	Single Page: TIFF/JPEG/PDF/High Compression PDF/PDF-A Multi-Page: TIFF/PDF/High Compression PDF/PDF-A
<b>Compression</b>	B&W - 1bit (MH/MR/MMR/JBIG2), Grayscale (JPEG); Full-color - JPEG
<b>Interface Support</b>	10Base-T/100Base-TX/1000Base-T, Wireless LAN (IEEE802.11 a/b/g/n), USB 2.0, SD card slot
<b>Protocol</b>	Network: TCP/IP; Sending Email: SMTP, POP3; Scan to Folder: SMB, FTP
<b>Scanner Features:</b>	B&W/Full-color Photo, B&W/Full-color Text, Auto Color Select, Auto Density, Image Rotation, Mixed Size/SADF/Batch Mode, Reduce and Enlarge, Split Scan, Scan-to Email/SMB/FTP/URL/PDF/A/Digitally Signed PDF, TWAIN Scanning, USB/SD 2.0 Scanning, LDAP Support, Drop Out Color Send, Distributed Scan Management, Preview Before Transmission, WS-Scanner

## Document Server Specifications (Standard)

<b>Max. Stored Documents</b>	3,000
<b>Max. Pages per Document</b>	3,000
<b>Max. Stored Pages</b>	15,000
<b>Folder Management</b>	Yes (password protected)

## Fax Specifications (Optional)

<b>Circuit</b>	PSTN, PBX
<b>Compatibility</b>	ITU-T (CCITT) G3, Additional G3 opt.
<b>Resolution</b>	Standard mode: 200 x 100 dpi Detail mode: 200 x 200 dpi Super Fine mode: 400 x 400 dpi (with optional 64 MB memory)
<b>Compression Method</b>	MH, MR, MMR, JBIG
<b>Modem Speed</b>	33.6 K - 2,400 bps with auto shift down
<b>Transmission Speed</b>	G3: Approx. 2 sec.
<b>Memory Backup</b>	1 hour
<b>Quick/Speed Dials</b>	2,000 numbers
<b>Group Dials</b>	100 groups (500 per group)
<b>SAF Memory Capacity</b>	Standard: 4 MB (approx. 320 pages), Maximum: 60 MB (approx. 4,800 pages with memory option)
<b>Fax Features</b>	Detection of Misplaced Document, Double-check of Destination Address, Direct SMTP, Internet Fax (T.37), LAN Fax, IP Fax (T.38), Forward to Email/Folder, Paperless Fax, LDAP Support, Universal Send (Simultaneous Fax and Scan), Fax Output Timer, Remote Fax (option)

## Accessories

<b>RT4050 Large Capacity Tray (LCT)</b>	Paper Capacity: 2,200 sheets Paper Size: Up to 13" x 19.2" Paper Weight: 14 lb. - 110 lb. Cover (52 - 300 g/m <sup>2</sup> ) Dimensions (WxDxH): 34.2" x 28.7" x 25.9" (869 x 730 x 658 mm) Weight: 180 lbs. (82 kg)
<b>RT4020 Large Capacity Tray (LCT)</b>	Paper Capacity: 4,400 sheets Paper Size: 8.5" x 11" Paper Weight: 14 lb. - 80 lb. Cover (52 - 216 g/m <sup>2</sup> ) Dimensions (WxDxH): 19.7" x 21.3" x 24.6" (500 x 540 x 625 mm) (with LG unit) Weight: 44 lbs. (20 kg)
<b>CS4010 9-Bin Mailbox</b>	Stack Capacity of Bins: 100 sheets Paper Size: 5.5" x 8.5" - 11" x 17" Paper Weight: 16 lb. - 34 lb. Bond (60 - 128 g/m <sup>2</sup> ) Dimensions (WxDxH): 21.2" x 23.6" x 26" (540 x 600 x 660 mm) Weight: 33 lbs. (15 kg)
<b>CI4040 Single Source Cover Interposer Tray</b>	Paper Size: 5.5" x 8.5" - 11" x 17" Paper Weight: 17 lb. Bond - 80 lb. Cover (64 - 216 g/m <sup>2</sup> ) Stack Capacity: 200 sheets x 1 tray Dimensions (WxDxH): 19.6" x 23.6" x 23.6" (500 x 600 x 600 mm) Weight: 26.4 lbs. (12 kg)
<b>CI4020 Dual Source Cover Interposer</b>	Paper Size: 5.5" x 8.5" - 13" x 19" Paper Weight: 17 lb. Bond - 80 lb. Cover (64 - 216 g/m <sup>2</sup> ) Stack Capacity: 200 sheets x 2 trays Dimensions (WxDxH): 19.7" x 29" x 50" (540 x 730 x 1,270 mm) Weight: 99 lbs. (45 kg)
<b>SR4110 3,000-Sheet Finisher with 100-Sheet Stapler</b>	Capacity (Proof Tray): 500 sheets (8.5" x 11" or smaller) 250 sheets (8.5" x 14" or larger)

<b>Capacity (Shift Tray)</b>	8.5" x 11" - 3,000 sheets (LEF) 8.5" x 11" - 11" x 17" - 1,500 sheets (LEF) 12" x 18" - 13" x 19.2" - 1,000 sheets (LEF) 5.5" x 8.5" - 13" x 19.2" Proof Tray: 14 lb. Bond - 80 lb. Cover (52 - 216 g/m <sup>2</sup> ) Shift Tray: 14 lb. Bond - 110 lb. Cover (52 - 300 g/m <sup>2</sup> )
<b>Paper Size</b>	8.5" x 11" - 100 pages 8.5" x 14" - 11" x 17" - 50 pages
<b>Staple Position</b>	Top, Bottom, 2-Staple, Top Slant
<b>Dimensions (WxDxH)</b>	31.7" x 28.7" x 38.5" (806 x 730 x 980 mm)
<b>Weight</b>	165 lbs. (75 kg)

<b>SR4120 3,000-Sheet Finisher with 65-Sheet Stapler</b>	Capacity (Proof Tray): 250 sheets (8.5" x 11" or smaller) 50 sheets (8.5" x 14" or larger)
<b>Capacity (Shift Tray)</b>	8.5" x 11" - 3,000 sheets 8.5" x 14" - 13" x 19.2" - 1,500 sheets 5.5" x 8.5" - 13" x 19.2" Proof Tray: 14 lb. Bond - 80 lb. Cover (52 - 220 g/m <sup>2</sup> ) Shift Tray: 14 lb. Bond - 133 lb. Cover (52 - 360 g/m <sup>2</sup> )
<b>Paper Size</b>	8.5" x 11" - 11" x 17" - 65 pages
<b>Staple Position</b>	Top, Bottom, 2-Staple, Top Slant
<b>Dimensions (WxDxH)</b>	25.9" x 28.7" x 38.6" (657 x 730 x 980 mm)
<b>Weight</b>	83.6 lbs. (38 kg)

<b>SR4130 2,000-Sheet Booklet Finisher</b>	Capacity (Proof Tray): 250 sheets (8.5" x 11" or smaller) 50 sheets (8.5" x 14" or larger)
<b>Capacity (Shift Tray)</b>	8.5" x 11" - 2,000 sheets (LEF) 8.5" x 11" - 13" x 19.2" - 1,000 sheets (LEF) 5.5" x 8.5" - 13" x 19.2" Proof Tray: 14 lb. Bond - 80 lb. Cover (52 - 220 g/m <sup>2</sup> ) Shift Tray: 14 lb. Bond - 133 lb. Cover (52 - 360 g/m <sup>2</sup> )
<b>Paper Size</b>	8.5" x 11" - 11" x 17" - 65 pages
<b>Saddle Stitch Staple Position</b>	8.5" x 11" - 13" x 18" - 20 pages
<b>Dimensions (WxDxH)</b>	Top, Bottom, 2-Staple, Top Slant, Booklet
<b>Weight</b>	25.9" x 28.7" x 38.6" (657 x 730 x 960) 127.6 lbs. (58 kg)

<b>FD4000 Multi-Folding Unit</b>	Folding Type: Single Sheet Mode: Z-Fold, Half-Fold, Letter Fold-in, Letter Fold-out, Double Parallel, Gate-Fold Multiple Sheet Mode: Half-Fold, Letter Fold-in, Letter Fold-out; up to 3 sheets.
<b>Paper Size:</b>	Single Sheet Mode: Z folding: 8.5" x 11" - 12" x 18"; Half folding: 8.5" x 11" - 13" x 19.2"; Letter folding: 8.5" x 11" - 12" x 18"; Double Parallel/ Gate folding: 8.5" x 11" - 12" x 18" Multiple Sheet Mode: Half folding: 8.5" x 11" - 13" x 19.2"; Letter Fold-out: 8.5" x 11" - 8.5" x 14"; Letter Fold-in: 8.5" x 11" - 12" x 18" 18.5" x 38.5" x 28.7" (470 x 980 x 730 mm)
<b>Dimensions (WxDxH)</b>	203 lbs. (92 kg)

## Additional Accessories

PU5000 Punch Unit; PU3060 Punch Unit; Output Jogger Unit Type M25; 11" x 17" Tray Unit Type M26; 8.5" x 14" Tray Unit for RT4020 LCT; Banner Paper Guide Tray Type M26; 1-Bin Copy Tray Type M26; Cooling Fan Unit Type M26; Cooling Fan Unit Type M31; Adobe PostScript3 Unit Type M26; IPDS Unit Type M26 (Late Availability); IEEE802.11a/g/n Interface Unit Type M19; IEEE1284 I/F Board Type M19; File Format Converter Type M19; OCR Unit Type M13; Fax Connection Unit Type M26; G3 Interface Unit Type M26; Fax Memory Unit Type M26 - 64 MB; Unicode Font Package for SAP; Copy Connector Type M25; Smart Card Reader Built-in Unit Type M19; GBC StreamPunch Ultra MT; Plockmatic 350-m Booklet Maker; NFC Card Reader Type M19; External Keyboard Bracket Type M25; External Keyboard; Extended USB Board Type M19; XPS Direct Print Option Type M26; Tab Sheet Holder Type M2; Optional Counter Interface Unit Type M12

For maximum performance and yield, we recommend using genuine Ricoh parts and supplies.

Specifications subject to change without notice.

**RICOH**  
imagine. change.

www.ricoh-usa.com

Ricoh USA, Inc., 70 Valley Stream Parkway, Malvern, PA 19355, 1-800-63-RICOH

Ricoh® and the Ricoh Logo are registered trademarks of Ricoh Company, Ltd. All other trademarks are the property of their respective owners. ©2016 Ricoh USA, Inc. All Rights Reserved. The content of this document, and the appearance, features and specifications of Ricoh products and services are subject to change from time to time without notice. Products are shown with optional features. While care has been taken to ensure the accuracy of this information, Ricoh makes no representation or warranties about the accuracy, completeness or adequacy of the information contained herein, and shall not be liable for any errors or omissions in these materials. Actual results will vary depending upon use of the products and services, and the conditions and factors affecting performance. The only warranties for Ricoh products and services are as set forth in the express warranty statements accompanying them.